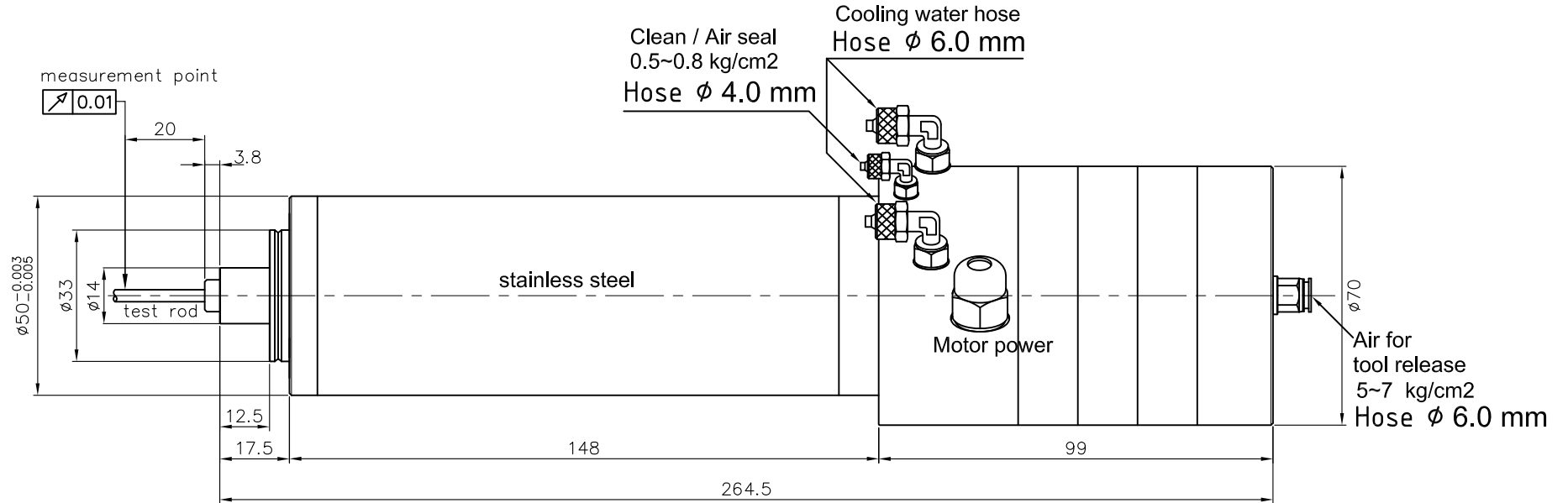
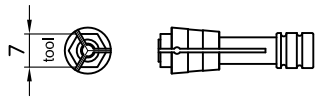


MP50-56R (ATC)

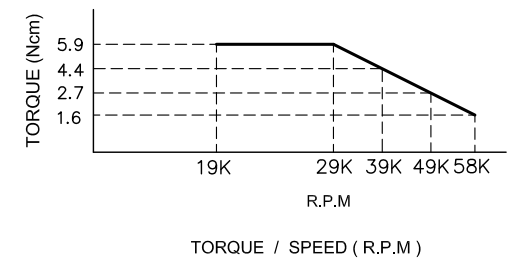
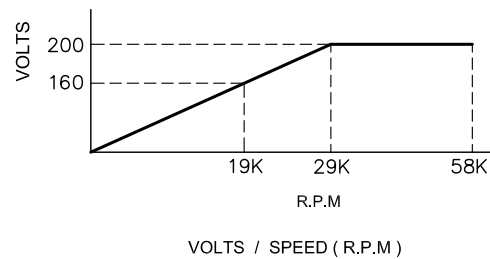
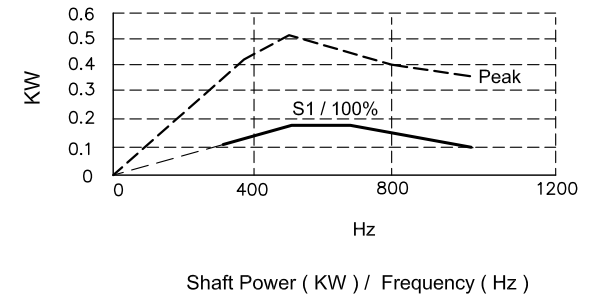
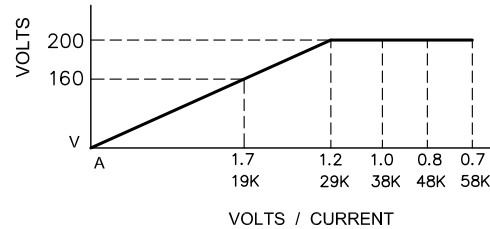


COLLET

φ 3.0 mm , φ3.175 mm , φ4.0 mm



- FRONT CERAMIC BEARING 6002 x 2
BACK CERAMIC BEARING 6000 x 2
- PTC-130 °C



Specification

Units

Motor Type (馬達型式)	220V . 2P . 3 φ
Power Output (輸出功率)	120W (peak 350W)
Maximun Speed (最高轉速)	58000 R.P.M (max.)
Maximun Dynamic Runout (偏擺精度)	0.01 mm
Cooling Water Flow Rate (冷卻水流量)	20 IMP (L/Hour)
Cooling Water Inlet Temperature (冷卻水進入溫度)	18~22 °C
Body Size (外部尺寸)	50 mm (h6)
Weight (重量)	2.9 kg