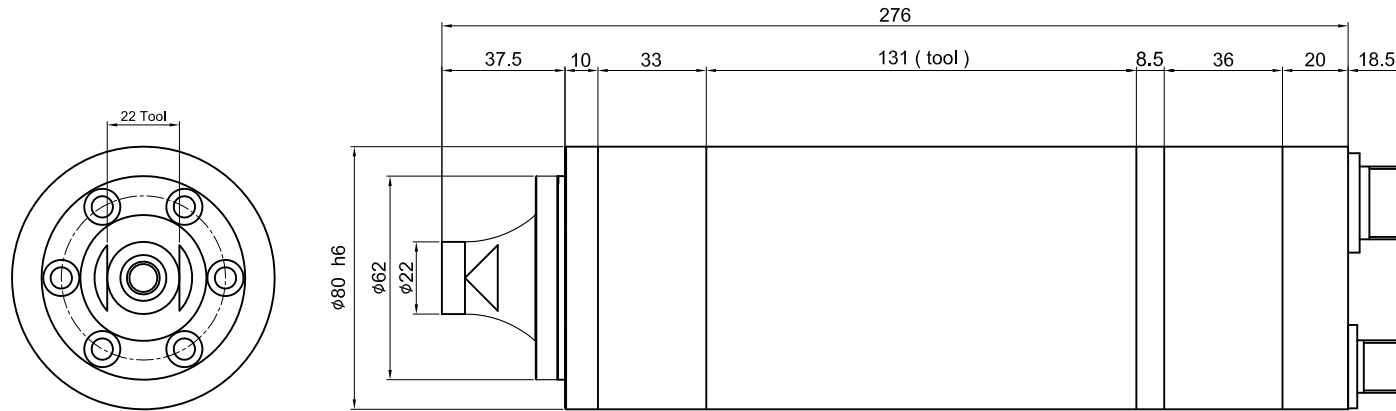
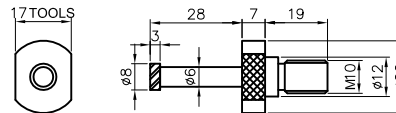
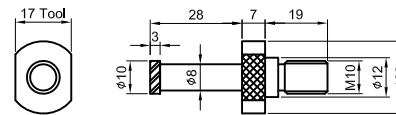
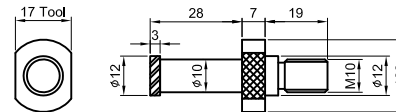
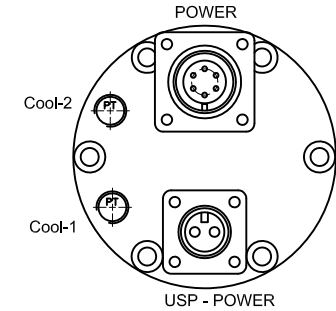


Internal Hole Ultrasonic Grinding Spindle Motor

IHUGSP80-20K-1.5KW-Co



POWER
 電源接線: 1 - U 4 -
 2 - V 5 -
 3 - W 6 - Ground 接地



USP - POWER
 超音波接線: 1- +
 2- -

Specification

Datas

Specification	Datas
Motor Type (馬達型式)	220V, 2P, $\phi 3$
Power Output (輸出功率)	1.5Kw at 20000 rpm
Maximun Speed (最高轉速)	20000 rpm
Frequency (超音波頻率)	2.2 ~ 2.7 K Hz
Maximun Output Power (超音波功率)	300 W
Amplitude Range (超音波振幅)	2 μ m ~ 10 μ m
Maximun Dynamic Runout (偏擺精度)	0.002 mm
Cooling Water Flow Rate (冷卻水流量)	56.9 l/hour
Cooling Water Inlet Temperature (冷卻水進口溫度)	24~26 °C
Body Size (外部尺寸)	80 mm(h6)
Weight (重量)	12.5 Kg

Open the machlne every day,
 so that the speed of the spindle 0~6000 rpm about 10minutes, slowly accelerated.
 The bearing slowly heating, so that the life of the spindle will be longer

The manufacturer has the power to change the performance and appearance dimensions.
 The change is made to the advanced method of the product.